

MILTECH SUR Series

Advanced Long-Range Multi-Sensor Surveillance System

Experience unparalleled surveillance performance with the **MLT-SUR-SD200LR**—Miltech Hellas's cutting-edge marine thermal imaging solution. Engineered with a high-resolution, cooled thermal sensor (640 x 480 array format), this system delivers superior clarity for long-range detection, even in the most challenging environments.

Built for rugged reliability and seamless adaptability, the **MLT-SUR-SD200LR** offers a modular, upgradeable design with multiple lens options to suit mission-specific needs. Equipped with an industry-leading 32km Laser Range Finder and optional digital magnetic compass and GPS integration, this system is trusted by professionals for its unmatched accuracy and cost-effectiveness in medium to long-range surveillance operations. Backed by Miltech Hellas's commitment to quality, rapid service turnaround, and long-term support, the **MLT-SUR-SD200LR** is the ultimate force multiplier for mission-critical applications



24/7 Uninterrupted Performance

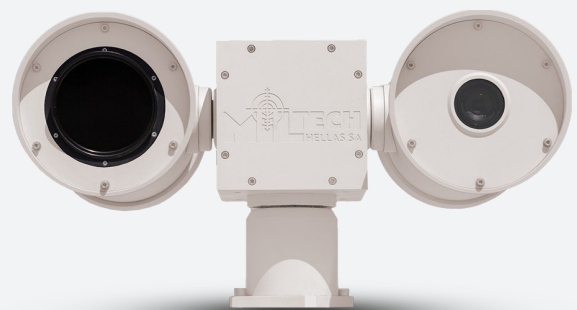
Engineered for continuous operation, ensuring round-the-clock surveillance without missing a moment.

Precision Optics & Adaptive Design

Featuring 12x continuous optical zoom with autofocus for precise target tracking, plus a customizable, upgradeable system to meet evolving operational needs.

Military-Grade Durability

Built to MIL-STD-810 standards, guaranteeing exceptional reliability and performance in the harshest conditions.



Applications

- Border Perimeter Security
- Coastal Surveillance
- Industrial Facility Security
- Critical Infrastructure Protection
- Deployable Vehicle Operations

MLT-SUR-SD200LR

THERMAL IMAGING:

Sensor Resolution (in pixels).	640 X 480
Pixel pitch	10µm pixel pitch
Spectral Response	3-5 um
Thermal Sensitivity	<28mK
Detector Type	Cooled MWIR
Field of View	20° to 1.6°
Optical Zoom	12X Continuous Zoom
Digital Zoom	Up to 4x
Focus	Autofocus and Manual Focus
Image Stabilization	e-Stabilization
Image Processing	Contrast Enhancement / Polarity Control / Histogram Equalization
Image Control	Polarity: White/Hot/ Black Hot Orientation: Invert / Revert

DAYLIGHT HD CAMERA:

Image Sensor	Type 1/2.8" Full HD CMOS Color Sensor
Horizontal Field of View	64° to 2.4°
Optical Zoom	30x
Digital Zoom	12x
Focus	Autofocus / Manual
Image Stabilization	e-Stabilization
Minimum Sensitivity	Color up to 0.009 lux.
Other-Features	Defog, Digital Noise Reduction

PAN-TILT UNIT:

Azimuth Range	360° Continuous
Azimuth Velocity	0.1°/s to 50°/s
Elevation Range	± 90°
Elevation Velocity	0.1°/s to 50°/s
Positioning Accuracy	≤ ± 1,5 mrad

POWER:

Input Voltage	24VDC
Power Consumption	< 80 W Typical

INTERFACES:

Remote Control	Ethernet
Video Output	IP, ONVIF & Composite (PAL / NTSC User Defined)
IP Integrations	Integrated IP Encoders Provide Simultaneously H.264 RSTP (Optional H.265) & ONVIF Profile-S

PHYSICAL CHARACTERISTICS:

Camera System Weight	~ 20kg
Camera Size (L x W x H)	360 x 540 x 300mm

ENVIRONMENTAL:

Operating Temperature Range	-30° C to +65° C
IP Rating	IP66
Standard	MLT-STD-810G
Material	Metal Anodized

OPTIONS:

Automatic Tracking	Hardware and User based target acquisition and tracking capability
Laser Range Finder	Up to 32 Km (12Km for Standard NATO Target)